



COMPANY OVERVIEW

DEMEX is a privately owned complete solutions provider for industrial, resources, and civil projects requiring construction, demolition, and environmental services. Established over 25 years, our capacity to successfully deliver projects Australia-wide in difficult, and frequently remote locations, is predicated on an enduring commitment to excellence and diligent risk management.

Understanding each project is unique, DEMEX takes an approach that fosters innovation within the parameters of relevant industry, environmental, and health and safety legislation and codes. Delivering value to our clients is integral to the way we work, an approach evident in our astute governance of project costs, time, quality, safety, and the environment.

As project management specialists, we draw from our inhouse engineering and trade teams, integrating specialist subcontractors as required to deliver end-to-end solutions. Project teams are supplemented with Indigenous and local labour where appropriate, consistent with our corporate social responsibilities.

CAPABILITY

DEMEX civil and bulk earthworks capability encompasses experience across projects of varying size, scope, and location; a fleet of late model, well maintained plant, machinery and equipment; and a team of experienced, long term DEMEX operators who understand the importance of safe and efficient project delivery.

In terms of civil contracting capability and experience, we can self-perform, or manage and supervise as principal contractor all works performed by subcontractors. We have a core team of experienced project managers, site supervisors and operators fluent in techniques and methods for managing project production schedules, regardless of impacts from weather, conditions, and other project works. Adopting principles of value engineering during planning and implementation means we support clients to improve overall project value.

WHAT WE DO

PROJECT DELIVERY

- Project feasibility
- Design
- Engineering
- Approvals
- Programming
- Costing
- Execution
- WHSEQ
- Sustaining capital



INDUSTRY

- Mining & Resources
- Industrial
- Health & Education
- Government
- Defence
- Property
- Building & Construction
- Civil



CAPABILITY

- Demolition
- Remediation
- Land Rehabilitation
- Hazmat services
- Civil engineering & bulk earthworks
- Excavation
- Environmental
- Remote Sites
- Feasibility Studies



TRACK RECORD

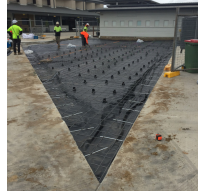


ARMIDALE SECONDARY COLLEGE REDEVELOPMENT

The civil portion of this project involved excavation and placement of over 40,000m³ of material. To meet this task, DEMEX mobilised an array of earth moving machines, such as excavators, compactors, dozers, scrappers and rollers. The works required detailed programming and staging in order to avoid clashes with other trades on site.

\$5.7 M

Richard Crookes
Construction



IPSWICH TURF CLUB

The civil part of the project included remediation of asbestos contaminated soil, with soil relocated to a purpose built cell.

\$0.9 M

Broad
Constructions



ENERGY QUEENSLAND LIMITED (EQL)

The entire inner city site was impacted by legacy in-ground asbestos contamination. DEMEX's scope of works included the removal of asbestos contaminated soil, bulk excavation works, detailed excavation of footings, backfilling of retaining walls, base and sub-base works (laying and compacting) and asphalt works.

\$1.9 M

Alder
Constructions



WOLLEMI PLACE, TWEED HEADS, STAGE 1

Project earth works required bulk excavation (cut and fill) to level the ground, during which DEMEX discovered contamination (asbestos contaminated soil) which halted site works and resulted in splitting the project works into multiple stages. Stage 2 will consist of decontamination of the soil, dewatering and completion of bulk excavation work.

\$4.3 M

McNab



SOUTH MACKAY CATHOLIC COLLEGE, STAGE 1

This project involved extensive civil works including a large portion of contaminated soil remediation, bitumen profiling, bulk earth works, compact and fill works, building pad installation, carpark works which included curbing, bitumen laying and line marking, excavation of retention basins, internal road networks and oval prep works.

\$1.18 M

Woollam
Constructions



WACOL LOGISTICS HUB, QLD

Significant demolition and bulk earthworks as principal contractor at this 18 hectare industrial site in a swamp. The project included demolition of all above ground structures and removal of hazardous materials. All concrete was reused onsite. Natural ground build up of 1.8 metres to finished bulk earthworks level. Recycling of 99 percent of all materials from the site, including 70,000 tonnes of concrete, 1,200 tonnes of steep, and close to 50 tonnes of timber.

\$14.2 M

Logos Property
Group



FORMER ORANGE BASE HOSPITAL, NSW

Principal contractor for demolition of the former Orange Base Hospital that included extensive hazardous material removal program and soil remediation works on a 23,000m² site resulting in removal of 10,000 tonnes of asbestos impacted soil.

\$3.34 M

Zauner
Construction



ASCOT GREEN BY MIRVAC

DEMEX was engaged as a subcontractor to complete site early works, implement sediment and erosion controls, site establishment, civil stormwater works, bulk earthworks, site dewatering, shotcrete works, detailed excavation, basement finishing works, piling works spoil management, and backfilling and ramps.

\$3.6 M

Mirvac

OUR CLIENTS



Department of
Natural Resources,
Mines and Energy



THALES

CITY OF
GOLDCOAST™

RICHARD CROOKES
CONSTRUCTIONS



LOGOS



FACILITIES AND EQUIPMENT

DEMEX owns, operates and maintains a substantial fleet of construction and demolition plant and equipment from its head office location. Inhouse service capacity extends to float transport, transport permits and escort services, a servicing and maintenance workshop, mobile site service vehicles, and exceptional ongoing plant risk assessment and maintenance.

- Excavators - 1.6T up to 62T with high-reach boom
- Attachments including various bucket sizes, pulverisers, steel sheers, rotating head and hammers
- Prime movers and semi trailer
- Trailers including super bins & float
- Hook trucks and bins
- Dedicated service truck
- Fleet of light vehicles
- Articulated haul trucks, compaction rollers and telescopic handlers
- Water Trucks

PEOPLE & CULTURE



RICHARD TODD
Company Director



TOBY SCHWENNESEN
Project Manager



GARREN HOLDSWORTH
Project Manager

We draw on the experience, skills, and commitment of our people to deliver projects safely and effectively for our clients. Many of our team, from directors through to labourers and operators, are long term DEMEX employees and bring decades of demolition industry experience to every project. This allows DEMEX to identify opportunities to realise economic value and deliver innovative project solutions for clients in challenging, remote, and complex environments.

Onsite project teams include project managers, site managers, site supervisors, labourers, operators, asbestos technicians, and third party contractors for specialist service areas.

Project estimating, planning, and management is undertaken by a core group of professionals located at DEMEX's head office in Yatala, with many of the team bridging both site and project management roles.

SUSTAINABILITY STEWARDSHIP

Together with our delivery partners, we strive to conduct our business in an ethically, environmentally, and socially responsible manner. To support these practices as our business has matured, we have implemented the systems and processes that allow us to meet the standards expected by government and tier one clients, including independently accredited health, safety, environment, and quality systems. Additionally, we are committed to ensuring our key personnel are well versed in these systems and our commitment to addressing issues that are part of our sustainability commitments.

Demex maintains an outstanding sustainability track record, with our resource recovery solutions, including screening for waste minimisation, scrap metal processing and recycling, precious metal segregation and salvage, onsite crushing for reuse, and remediation techniques to reduce landfill exposure. Our environmental management approach is tailored according to project needs with outcomes achieved that exceed client expectations.

COMMUNITY

Our commitment to community is demonstrated in supporting local and regional businesses through ongoing additional costs such as maintenance supplies and services along with a range of professional services, community mental health initiatives, adherence to a robust code of ethics, and providing pre-vocational training opportunities for skilled and unskilled local labour.



INDIGENOUS AND LOCAL ECONOMIC DEVELOPMENT

Acknowledging the importance of contributing to the economic development and capacity building of Indigenous Australians, Demex has an Indigenous Employment Strategy (IES), which has been developed in conjunction with 100 percent owned Indigenous business, Stapleton Indigenous Solution (SIS). In the interest of providing both business and employment opportunities, our IES approach provides for:

- Procuring supply from local and Indigenous businesses, representing meaningful percent of total project spend
- Cross cultural training, both for the Demex crew and Indigenous contractors
- Project specific training for Indigenous contractors
- Delivery of Australian road safety and road rules training in language through our inhouse DriveAbout Workforce training program.

