



COMPANY OVERVIEW

We assist infrastructure asset owners to undertake decommissioning, deconstruction, asbestos and hazardous materials removal, remediation, and civil and bulk earthworks on major projects and sustaining capital upgrades.

Our team thrives in complex and challenging environments that demand innovative solutions. From closure planning to rehabilitation, we work with you to identify the approach to decommissioning, deconstruction, and mine closure that best supports your business' objectives. A strong HSEQ safe approach is evident on each project we undertake, demonstrated in our compliance record that provides confidence to clients in the integrity of our approach.

We undertake projects as both principal contractor and subcontractor, and on every project maintain our focus on achieving industry-leading standards of environmental stewardship, recycling up to 99 percent of waste salvaged at site.

DECOMMISSIONING

Decommissioning is an important step in the lifecycle of any structure and is often not well understood by asset owners. As ageing and redundant manufacturing facilities, mine sites, and utilities come to the end of their useful life, they must be retired and decommissioned through deconstruction, recycling and disposal of materials. Depending on the structure, facility or mine, clean up and remediation requirements will vary, and project owners should understand there is no single ideal solution.

Specialising in the decommissioning of industrial, energy, mining, and manufacturing facilities, DEMEX is among Australia's leading decommissioning and demolition contractors. We provide commercial and industrial decommissioning of complete and partial structures (internal and external), bridges, structures at height, multi-level structures, detailed and intricate demolition, and high risk demolition requiring specialised machinery and project management.

WHAT WE DO

PROJECT DELIVERY

- Project feasibility
- Design
- Engineering
- Approvals
- Programming
- Costing
- Execution
- WHSEQ
- Sustaining capital



INDUSTRY

- Mining & Resources
- Industrial
- Health & Education
- Government
- Defence
- Property
- Building & Construction
- Civil
- Ports & Marine



CAPABILITY

- Demolition
- Remediation
- Land Rehabilitation
- Hazmat services
- Civil engineering & bulk earthworks
- Excavation
- Environmental
- Remote Sites
- Feasibility Studies



DECOMMISSIONING: A RISK-BASED APPROACH

Working Australia-wide in urban, regional, port and marine, and remote sites such as mines and power stations, we are licensed to provide unrestricted demolition services for the mining, resources, and government sectors. Our capacity for innovation and unwavering commitment to safety means we're never daunted by a project's complexity, location, size or duration.

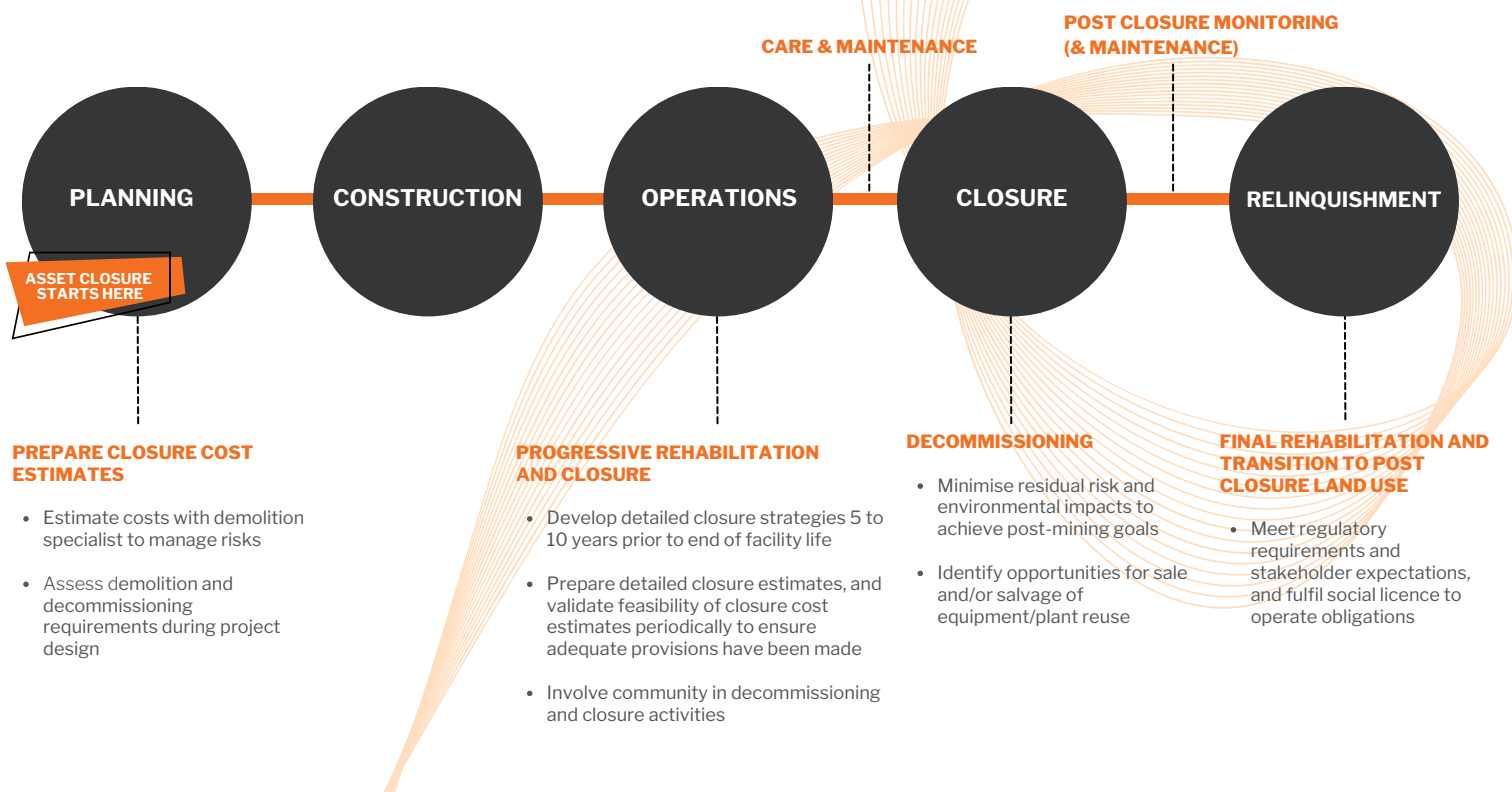
Whether you're leading a government project, a principal contractor, or project owner needing an independent contractor for demolition services and decommissioning, we understand the challenges of just getting to ground zero for your project. Our decommissioning and demolition capability extends to:

- Complete and partial structures, including in built up urban areas
- Bridges
- Multi-level structures and structures at height
- Internal building demolition (soft-strips)
- Projects requiring specialised intricate demolition work
- Remote site demolition projects, for example, power station and mine site decommissioning
- Hazardous material removal and decontamination, for example, for asbestos and explosive materials
- Project specific environmental risk management, for example, for noise, vibration, and dust
- Site remediation services
- Waste recycling and disposal services
- Early project civil works and site preparation.

We recognise every project is unique and formulate an approach accordingly, bringing our skills, experience, and professionalism to deliver successful outcomes on time and within budget.

ASSET CLOSURE PLANNING AND IMPLEMENTATION

Early planning can reduce future asset closure costs, risks and liabilities and improve community and regulatory confidence



TRACK RECORD



INDUSTRIAL MILL

DEMEX was engaged to undertake demolition of mill infrastructure, including the crushing house, tank farms, factory workshops and offices, molasses tank, clarification tanks, processing area, sugar storage shed, and tanks.

\$4 M Confidential



COLGATE PALMOLIVE MANUFACTURING FACILITY

DEMEX was engaged as principal contractor for The Colgate Palmolive Demolition Project. The project included the complete demolition of two major structures and a number of smaller facilities on this industrial site located on Brisbanes outskirts.

\$2.7 M Logo Property Group



COLLINGWOOD TIN MINE PROCESSING PLANT

Engaged as the principal contractor to demolish the former tin mine's processing plant, located 30 minutes from Cooktown in North Queensland. Demolition of multiple structures, including processing plant, crusher, silo, and conveyors.

\$1.2 M Department of Natural Resources



BLAYNEY DEWATERING FACILITY, NSW

Engaged as the principal contractor to undertake decommissioning, demolition, and disposal of the Blayney Dewatering Plant, located at Newcrest's Cadia Valley Operations in New South Wales. DEMEX undertook reclamation of residual mining products prior to the commencement of demolition works and the remediation of contaminated soil, which included asbestos, copper, and arsenic.

\$2.0 M Newcrest Mining Limited



MUL034 AND MUL037 - MULWALA EXPLOSIVES FACILITY, NSW

Engaged as the principal contractor for the demolition of 47 of the highest-risk structures at the Mulwala Explosives Facility. Structures were deemed high risk as a result of residual nitrocellulose (NC) contamination. The site included oil refineries, chemical processing plants, and storage depots carrying chemicals in large quantities. All works were conducted while the site remained operational during Covid-19 protocols.

\$6.9 M Australian Munitions (Thales)

OUR CLIENTS



FACILITIES AND EQUIPMENT

DEMEX owns, operates and maintains a substantial fleet of construction and demolition plant and equipment from its head office location. Inhouse service capacity extends to float transport, transport permits and escort services, a servicing and maintenance workshop, mobile site service vehicles, and exceptional ongoing plant risk assessment and maintenance.

- Excavators - 1.6T up to 62T with high-reach boom
- Attachments including various bucket sizes, pulverisers, steel shears, rotating head and hammers
- Prime movers and semi trailer
- Trailers including super bins & float
- Hook trucks and bins
- Dedicated service truck
- Fleet of light vehicles
- Articulated haul trucks, compaction rollers and telescopic handlers
- Water Trucks

PEOPLE & CULTURE

We draw on the experience, skills, and commitment of our people to deliver projects safely and effectively for our clients. Many of our team, from directors through to labourers and operators, are long term DEMEX employees and bring decades of demolition industry experience to every project. This allows DEMEX to identify opportunities to realise economic value and deliver innovative project solutions for clients in challenging, remote, and complex environments.



**GARREN
HOLDSWORTH**
Project Manager



**MATT
KENT**
Project Manager



**TOBY
SCHWENNESEN**
Project Manager

Onsite project teams include project managers, site managers, site supervisors, labourers, operators, asbestos technicians, and third party contractors for specialist service areas.

Project estimating, planning, and management is undertaken by a core group of professionals located at DEMEX's head office in Yatala, with many of the team bridging both site and project management roles.

SUSTAINABILITY STEWARDSHIP

We recognise responsible corporate citizenship is an ongoing process that periodically requires adjustment to meet our own internal objectives and stakeholder expectations. Our sustainability efforts are focused in the following areas:

- Safe people with an appreciation of our commitments to Indigenous and culturally and linguistically diverse Australians
- Responsible resource management, focusing on circular economy principles
- Ethical supply chain management and local economic development.

Our commitment to community is demonstrated in supporting local and regional businesses through the purchase of ongoing additional costs such as maintenance supplies and services along with delivery of community initiatives, adherence to a robust code of ethics, and providing pre-vocational training opportunities for skilled and unskilled local labour.

COMMUNITY

Our commitment to community is demonstrated in supporting local and regional businesses through ongoing additional costs such as maintenance supplies and services along with a range of professional services, community mental health initiatives, adherence to a robust code of ethics, and providing pre-vocational training opportunities for skilled and unskilled local labour.



INDIGENOUS AND LOCAL ECONOMIC DEVELOPMENT

Acknowledging the importance of contributing to the economic development and capacity building of Indigenous Australians, DEMEX has an Indigenous Employment Strategy (IES), which has been developed in conjunction with 100 percent owned Indigenous business, Stapleton Indigenous Solution (SIS). In the interest of providing both business and employment opportunities, our IES approach provides for:

- Procuring supply from local and Indigenous businesses, representing meaningful percent of total project spend
- Cross cultural training, both for the DEMEX crew and Indigenous contractors
- Project specific training for Indigenous contractors
- Delivery of Australian road safety and road rules training in language through our inhouse DriveAbout Workforce training program.

