

### COMPANY OVERVIEW

We assist infrastructure asset owners to undertake decommissioning, deconstruction, asbestos and hazardous materials removal, remediation, and civil and bulk earthworks on major projects and sustaining capital upgrades.

Our team thrives in complex and challenging environments that demand innovative solutions. From closure planning to rehabilitation, we work with you to identify the approach to decommissioning, deconstruction, and mine closure that best supports your business' objectives. A strong HSEQ safe approach is evident on each project we undertake, demonstrated in our compliance record that provides confidence to clients in the integrity of our approach.

We undertake projects as both principal contractor and subcontractor, and on every project maintain our focus on achieving industry-leading standards of environmental stewardship, recycling up to 99 percent of waste salvaged at site.

### HIGH REACH CAPABILITY

High reach demolition may be employed as the most effective demolition method on a range of commercial and industrial demolition projects. High reach demolition is undertaken with high reach excavators fitted with a range of specialized attachments. Together, these allow mechanical demolition to perform work, which would have been performed manually in the past.

As an industry leader, DEMEX was among the first Australian demolition contractors to add high reach excavators to its fleet. This has allowed us to take on more complex projects across all market sectors.

Our high reach excavators are designed to operate under difficult conditions, with large robust undercarriages and attachments that can be configured to work at heights or process materials at or near ground level.

High reach demolition provides versatility and safer options for projects in difficult to access and operating environments.

### WHAT WE DO

#### PROJECT DELIVERY

- Project feasibility
- Design
- Engineering
- Approvals
- Programming
- Costing
- Execution
- WHSEQ
- Sustaining capital



#### INDUSTRY

- Mining & Resources
- Industrial
- Health & Education
- Government
- Defence
- Property
- Building & Construction
- Civil



#### CAPABILITY

- Demolition
- Remediation
- Land Rehabilitation
- Hazmat services
- Civil engineering & bulk earthworks
- Excavation
- Environmental
- Remote Sites
- Feasibility Studies



# HIGH REACH DEMOLITION: A RISK-BASED APPROACH

As a business, we maintain a deep commitment to the highest standards of safety and professionalism. Business wide accreditation is supported by a continuous improvement approach to all aspects of practice relevant for demolition, remediation and HAZMAT works.

### Regulatory compliance across Australia

- Compliance with State and Territory WH&S regulations, including distinctions in Victoria
- Deep understanding of environmental regulations enforced by each State and Territory

### Licensed and accredited for asbestos removal

- Federal Safety Accredited (FSC) Accredited
- Queensland, NSW, and ACT Demolition Licence
- Queensland Class A Asbestos Removal Licence
- Licensed for waste transfer in all states and territories
- ISO quality, safety, and environmental management systems accredited and certified



VALUE FROM  
SALVAGED  
MATERIALS



SUPPORTS  
CIRCULAR ECONOMY  
OBJECTIVES



SAFE  
REMOVAL  
OF HAZMAT



GIVE NEW  
LIFE TO  
RECYCLED  
MATERIALS



IMPROVED  
ENVIRONMENTAL  
IMPACT



MINIMAL  
WASTE TO  
LANDFILL



# HIGH REACH DEMOLITION: SAFE AND SUSTAINABLE

## TRACK RECORD



### SURFERS ROYALE APARTMENTS

DEMEX was engaged as principal contractor to undertake all demolition of the 15 storey building, including a soft strip, deconstruction, and asbestos material removal.

\$2.7 M

Parity Property

A top down methodology was implemented successfully at Surfere Royale; a first for the DEMEX team.



### TURBOT STREET

A demolition undertaken in the heart of Brisbane's CBD, 200 Turbot Street involved deconstruction of two adjoining buildings situated on a rock substructure located over a live rail corridor between Roma Street Station and Central Station, the city's two busiest train stations.

\$4.2 M

Mirvac



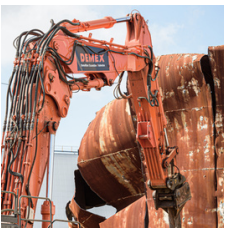
### CALA DEI APARTMENTS

The scope of work revolved around the Demolition of the 14 storey residence in a high density area using the 62T high reach excavator.

\$0.6 M

Spyre Group

A 3 metre high pad was engineered and constructed to create a safe platform above the basement to enable additional reach for demolition works at the building's highest levels.



### PORT OF BUNDABERG

DEMEX was engaged by Okara Pty Ltd to undertake demolition of all on site structures and removal of 8 fuel storage tanks at the Port of Bundaberg, located in Bundaberg, a regional Queensland town. Removal of the tanks was another step in the upgrade of port infrastructure being undertaken by the owner, Gladstone Port Corporation.

\$0.33

Okara Pty Ltd



### BLAYNEY DEWATERING FACILITY, NSW

Engaged as the principal contractor to undertake decommissioning, demolition, and disposal of the Blayney Dewatering Plant, located at Newcrest's Cadia Valley Operations in New South Wales. Demex undertook reclamation of residual mining products prior to the commencement of demolition works and the remediation of contaminated soil, which included asbestos, copper, and arsenic.

\$2.0 M

Newcrest Mining Limited

## OUR CLIENTS



## FACILITIES AND EQUIPMENT

DEMEX owns, operates and maintains a substantial fleet of construction and demolition plant and equipment from its head office location. Inhouse service capacity extends to float transport, transport permits and escort services, a servicing and maintenance workshop, mobile site service vehicles, and exceptional ongoing plant risk assessment and maintenance.

- Excavators - 1.6T up to 62T with high-reach boom
- Attachments including various bucket sizes, pulverisers, steel shears, rotating head and hammers
- Prime movers and semi trailer
- Trailers including super bins & float
- Hook trucks and bins
- Dedicated service truck
- Fleet of light vehicles
- Articulated haul trucks, compaction rollers and telescopic handlers
- Water Trucks

## PEOPLE & CULTURE

We draw on the experience, skills, and commitment of our people to deliver projects safely and effectively for our clients. Many of our team, from directors through to labourers and operators, are long term DEMEX employees and bring decades of demolition industry experience to every project. This allows DEMEX to identify opportunities to realise economic value and deliver innovative project solutions for clients in challenging, remote, and complex environments.



**GARREN  
HOLDSWORTH**  
Project Manager



**MATT  
KENT**  
Project Manager



**TOBY  
SCHWENNEESEN**  
Project Manager

Onsite project teams include project managers, site managers, site supervisors, labourers, operators, asbestos technicians, and third party contractors for specialist service areas.

Project estimating, planning, and management is undertaken by a core group of professionals located at DEMEX's head office in Yatala, with many of the team bridging both site and project management roles.

## SUSTAINABILITY STEWARDSHIP

We recognise responsible corporate citizenship is an ongoing process that periodically requires adjustment to meet our own internal objectives and stakeholder expectations. Our sustainability efforts are focused in the following areas:

- Safe people with an appreciation of our commitments to Indigenous and culturally and linguistically diverse Australians
- Responsible resource management, focusing on circular economy principles
- Ethical supply chain management and local economic development.

Our commitment to community is demonstrated in supporting local and regional businesses through the purchase of ongoing additional costs such as maintenance supplies and services along with delivery of community initiatives, adherence to a robust code of ethics, and providing pre-vocational training opportunities for skilled and unskilled local labour.

## COMMUNITY

Our commitment to community is demonstrated in supporting local and regional businesses through ongoing additional costs such as maintenance supplies and services along with a range of professional services, community mental health initiatives, adherence to a robust code of ethics, and providing pre-vocational training opportunities for skilled and unskilled local labour.



## INDIGENOUS AND LOCAL ECONOMIC DEVELOPMENT

Acknowledging the importance of contributing to the economic development and capacity building of Indigenous Australians, DEMEX has an Indigenous Employment Strategy (IES), which has been developed in conjunction with 100 percent owned Indigenous business, Stapleton Indigenous Solution (SIS). In the interest of providing both business and employment opportunities, our IES approach provides for:

- Procuring supply from local and Indigenous businesses, representing meaningful percent of total project spend
- Cross cultural training, both for the DEMEX crew and Indigenous contractors
- Project specific training for Indigenous contractors
- Delivery of Australian road safety and road rules training in language through our inhouse DriveAbout Workforce training program.

