



COMPANY OVERVIEW

DEMEX is a privately owned complete solutions provider for industrial, resources, and civil projects requiring construction, demolition, and environmental services. Established over 25 years, our capacity to successfully deliver projects Australia-wide in difficult, and frequently remote locations, is predicated on an enduring commitment to excellence and diligent risk management.

Understanding each project is unique, DEMEX takes an approach that fosters innovation within the parameters of relevant industry, environmental, and health and safety legislation and codes. Delivering value to our clients is integral to the way we work, an approach evident in our astute governance of project costs, time, quality, safety, and the environment.

As project management specialists, we draw from our inhouse engineering and trade teams, integrating specialist subcontractors as required to deliver end-to-end solutions. Project teams are supplemented with Indigenous and local labour where appropriate, consistent with our corporate social responsibilities.

CAPABILITY

We assist mine operators to undertake closure planning and implementation, sustaining capital projects, and major projects requiring decommissioning, deconstruction, asbestos and hazardous materials removal, remediation, and civil earthworks.

Our team thrives in complex and challenging environments that demand innovative solutions. From closure planning to rehabilitation, we work with you to identify the approach to decommissioning, deconstruction, and mine closure that best supports your business' objectives. A strong HSEQ safe approach evident on each project we undertake, demonstrated in our compliance record that provides confidence to clients in the integrity of our approach.

We undertake projects as both principal contractor and subcontractor, and on every project maintain our focus on achieving industry-leading standards of environmental stewardship, recycling up to 99 percent of waste salvaged at site.

WHAT WE DO

PROJECT DELIVERY

- Project feasibility
- Design
- Engineering
- Approvals
- Programming
- Costing
- Execution
- WHSEQ
- Sustaining capital



INDUSTRY

- Mining & Resources
- Industrial
- Health & Education
- Government
- Defence
- Property
- Building & Construction
- Civil



CAPABILITY

- Demolition
- Remediation
- Land Rehabilitation
- Hazmat services
- Civil engineering & bulk earthworks
- Excavation
- Environmental
- Remote Sites
- Feasibility Studies



MINE SITE DEMOLITION: A RISK-BASED APPROACH

The challenges and risks for mine operators have never been greater, making the management of mine closure risk a key factor at all stages of the mine lifecycle. In the context of increasing expectations and legislation around progressive mine closure planning and activities, remediation, and rehabilitation, preparing and implementing a safe and cost-effective approach for demolition of mining related infrastructure is key.

While mine design and operations may be well understood by operators, the costs and design of progressive closure activities, such as mine site demolition, are not. At mine closure, operators have considerations that differ to operational concerns.

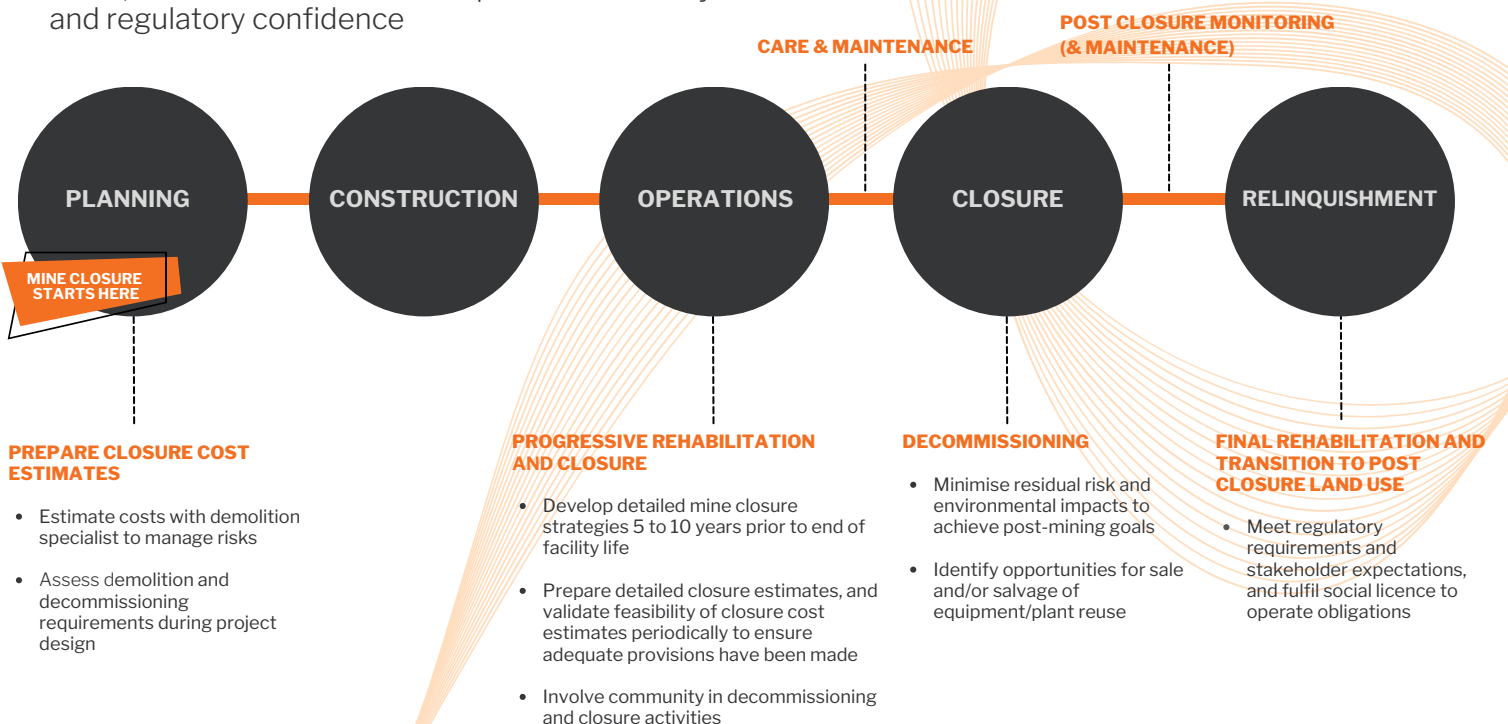
Without input from a demolition specialist, closure cost estimates for key activities such as tailings capping, rehabilitation, and demolition can be significantly underestimated. Calculation of costs varies according to operational status of the mine, the mine plan, progressive rehabilitation, and method for estimating costs.

Whether your project requires inputs to early mine design planning, is an operating mine, preparing for closure, or a disused or derelict facility, we will take a risk-based approach in development of appropriately mine closure cost estimates, methodologies, and demolition plans. From demolition consulting to complex infrastructure deconstruction and removal, remediation and rehabilitation, our team works with you to achieve your closure goals.



MINE CLOSURE PLANNING AND IMPLEMENTATION

Early planning can reduce future mine closure costs, risks and liabilities and improve community and regulatory confidence



TRACK RECORD



DUGALD RIVER MINE

Engaged as the rehabilitation consultant to provide third-party quotes for the future mine rehabilitation works at the MMG Limited owned Dugald River Mine located in Cloncurry, northwest Queensland. DEMEX provided a comprehensive proposal that included site demolition works, removal of roads and tracks, removal of powerlines, removal of PAF material and the treatment of the ground surface to be delivered over a 26 month project

Wulguru Technical Services



COLLINGWOOD TIN MINE PROCESSING PLANT

Engaged as the principal contractor to demolish the former tin mine's processing plant, located 30 minutes from Cooktown in North Queensland. Demolition of multiple structures, including processing plant, crusher, silo, and conveyors.

\$1.2 M

Department of Natural Resources



BLAYNEY DEWATERING FACILITY, NSW

Engaged as the principal contractor to undertake decommissioning, demolition, and disposal of the Blayney Dewatering Plant, located at Newcrest's Cadia Valley Operations in New South Wales. DEMEX undertook reclamation of residual mining products prior to the commencement of demolition works and the remediation of contaminated soil, which included asbestos, copper, and arsenic.

\$2.0 M

Newcrest Mining Limited



MUL034 AND MUL037 - MULWALA EXPLOSIVES FACILITY, NSW

Engaged as the principal contractor for the demolition of 47 of the highest-risk structures at the Mulwala Explosives Facility. Structures were deemed high risk as a result of residual nitrocellulose (NC) contamination. The site included oil refineries, chemical processing plants, and storage depots carrying chemicals in large quantities. All works were conducted while the site remained operational during Covid-19 protocols.

\$6.9 M

Australian Munitions (Thales)

OUR CLIENTS



FACILITIES AND EQUIPMENT

DEMEX owns, operates and maintains a substantial fleet of construction and demolition plant and equipment from its head office location. Inhouse service capacity extends to float transport, transport permits and escort services, a servicing and maintenance workshop, mobile site service vehicles, and exceptional ongoing plant risk assessment and maintenance.

- Excavators - 1.6T up to 62T with high-reach boom
- Attachments including various bucket sizes, pulverisers, steel shears, rotating head and hammers
- Prime movers and semi trailer
- Trailers including super bins & float
- Hook trucks and bins
- Dedicated service truck
- Fleet of light vehicles
- Articulated haul trucks, compaction rollers and telescopic handlers
- Water Trucks

PEOPLE & CULTURE



**RICHARD
TODD**

Company Director



**TOBY
SCHWENNESEN**

Project Manager

We draw on the experience, skills, and commitment of our people to deliver projects safely and effectively for our clients. Many of our team, from directors through to labourers and operators, are long term DEMEX employees and bring decades of demolition industry experience to every project. This allows DEMEX to identify opportunities to realise economic value and deliver innovative project solutions for clients in challenging, remote, and complex environments.

Onsite project teams include project managers, site managers, site supervisors, labourers, operators, asbestos technicians, and third party contractors for specialist service areas.

Project estimating, planning, and management is undertaken by a core group of professionals located at DEMEX's head office in Yatala, with many of the team bridging both site and project management roles.

SUSTAINABILITY STEWARDSHIP

Together with our delivery partners, we strive to conduct our business in an ethically, environmentally, and socially responsible manner. To support these practices as our business has matured, we have implemented the systems and processes that allow us to meet the standards expected by government and tier one clients, including independently accredited health, safety, environment, and quality systems. Additionally, we are committed to ensuring our key personnel are well versed in these systems and our commitment to addressing issues that are part of our sustainability commitments.

DEMEX maintains an outstanding sustainability track record, with our resource recovery solutions, including screening for waste minimisation, scrap metal processing and recycling, precious metal segregation and salvage, onsite crushing for reuse, and remediation techniques to reduce landfill exposure. Our environmental management approach is tailored according to project needs with outcomes achieved that exceed client expectations.

COMMUNITY

Our commitment to community is demonstrated in supporting local and regional businesses through ongoing additional costs such as maintenance supplies and services along with a range of professional services, community mental health initiatives, adherence to a robust code of ethics, and providing pre-vocational training opportunities for skilled and unskilled local labour.



INDIGENOUS AND LOCAL ECONOMIC DEVELOPMENT

Acknowledging the importance of contributing to the economic development and capacity building of Indigenous Australians, DEMEX has an Indigenous Employment Strategy (IES), which has been developed in conjunction with 100 percent owned Indigenous business, Stapleton Indigenous Solution (SIS). In the interest of providing both business and employment opportunities, our IES approach provides for:

- Procuring supply from local and Indigenous businesses, representing meaningful percent of total project spend
- Cross cultural training, both for the DEMEX crew and Indigenous contractors
- Project specific training for Indigenous contractors
- Delivery of Australian road safety and road rules training in language through our inhouse DriveAbout Workforce training program.

