



### COMPANY OVERVIEW

We assist mine, energy, heavy industry, and oil and gas asset owners at closure with decommissioning, demolition, remediation, and associated civil works.

Our team thrives in complex and challenging environments that demand innovative solutions. From closure planning to rehabilitation, we work with you to identify the approach to decommissioning, deconstruction, and asset closure that best supports your business' objectives. A strong HSEQ safe approach is evident on each project we undertake, demonstrated in our compliance record that provides confidence to clients in the integrity of our approach.

We undertake projects as both principal contractor and subcontractor, and on every project maintain our focus on achieving industry leading standards of environmental stewardship by recycling up to 99 percent of waste salvaged at site.

### DECOMMISSIONING

Decommissioning is an important step in the lifecycle of any structure and is often not well understood by asset owners who have been focused on operations. As ageing and redundant oil and gas facilities, mine sites, and utilities come to the end of their useful life, they must be retired and decommissioned through deconstruction, recycling and disposal of materials and sustainable site remediation. Depending on the structure, facility or mine, clean up and remediation requirements will vary, and project owners should understand there is no single ideal solution.

Specialising in the decommissioning of heavy industrial, energy, oil and gas, mining, and manufacturing facilities, DEMEX is among Australia's leading decommissioning and demolition contractors. We provide commercial and industrial decommissioning of complete and partial structures (internal and external), bridges, structures at height, multi-level structures, detailed and intricate demolition, and high risk demolition requiring specialised machinery and project management.

### WHAT WE DO

#### PROJECT DELIVERY

- Early contractor involvement
- Demolition strategy
- Approvals
- Programming
- Costing
- Execution
- WHSEQ
- Sustaining capital



#### SECTOR

- Mining & Resources
- Industrial
- Oil & Gas
- Health & Education
- Public Sector
- Defence
- Building & Construction
- Civil
- Ports & Marine



#### CAPABILITY

- Demolition consulting
- Closure studies
- Decommissioning
- Specialised demolition
- Partial & full structure dismantling
- Remediation
- Hazmat services
- Civil & bulk earthworks



## DECOMMISSIONING: A RISK-BASED APPROACH

Working Australia-wide in urban, regional, port and marine, and remote sites such as mines and power stations, we are licensed to provide unrestricted demolition services for the mining, resources, and government sectors. Our capacity for innovation and unwavering commitment to safety means we are never daunted by a project's complexity, location, size or duration.

Whether you are leading a public sector project, a principal contractor, or project owner needing an independent contractor for demolition services and decommissioning, we understand the challenges of your project.

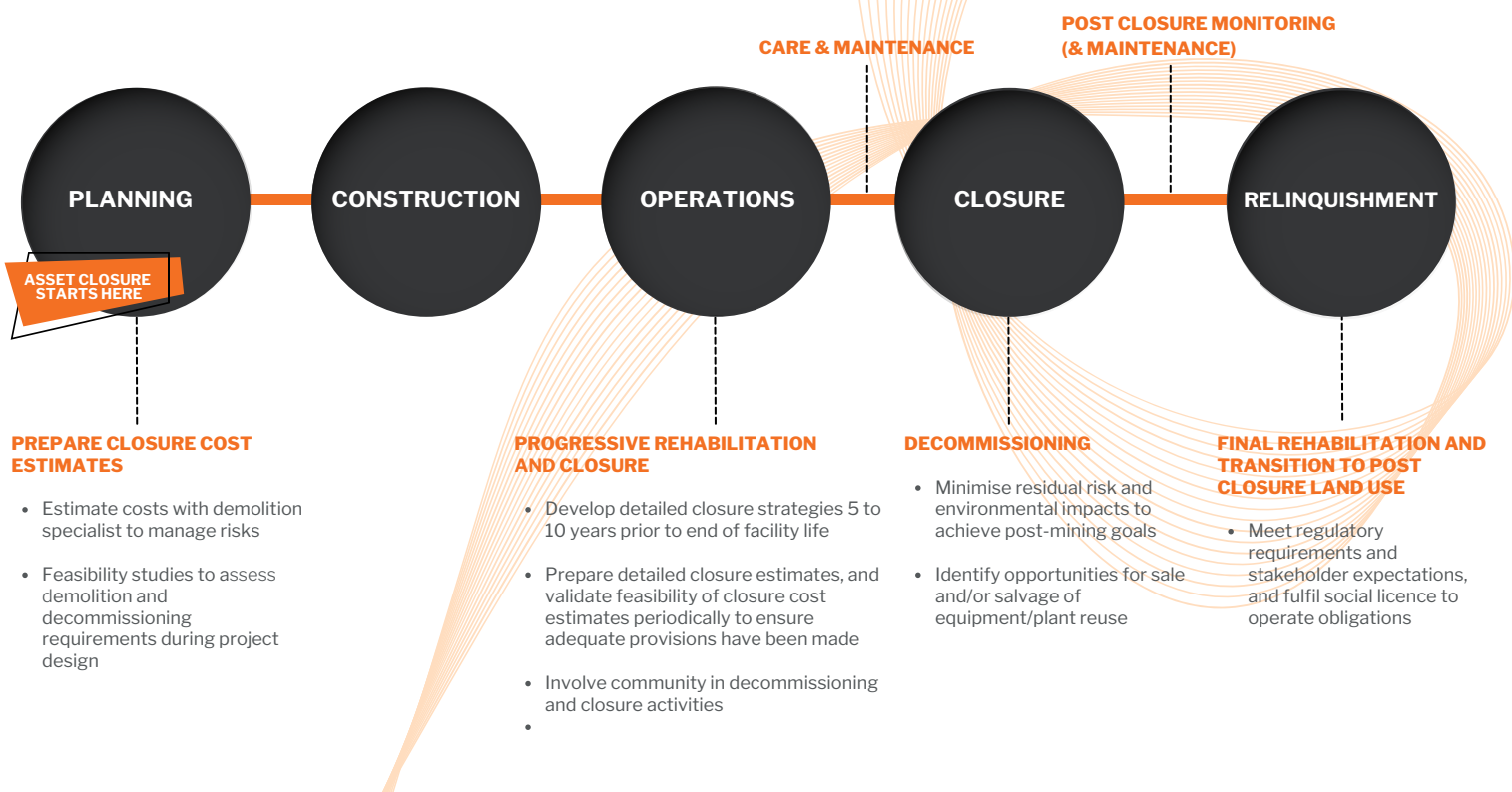
We recognise every project is unique and formulate an approach accordingly, bringing our skills, experience, and professionalism to deliver successful outcomes on time and within budget.

Our decommissioning and demolition capability extends to:

- Complete and partial structures, including aged mining, power, and oil and gas assets, both off and onshore.
- Bridges over marine and road infrastructure
- Multi-level structures and structures at height
- Projects requiring specialised intricate demolition work
- Remote site demolition projects, for example, power station and mine site decommissioning
- Hazardous material removal and decontamination, for example, for asbestos and explosive materials
- Project specific environmental risk management, for example, for noise, vibration, and dust
- Site remediation services
- Waste recycling and disposal services
- Early project civil works, remediation, and site preparation.

## MINE CLOSURE: PLANNING AND IMPLEMENTATION

Early planning can reduce future asset closure costs, risks and liabilities and improve community and regulatory confidence



## TRACK RECORD



### WA PLANT DISMANTLE & RELOCATION

DEMEX was engaged as principal contractor to dismantle and relocate a waste processing plant located in a 2,500m<sup>2</sup> industrial shed. The site remained operational during the dismantling before the plant was transported approximately 4,300 kilometres by road to Southeast Queensland. The plant was reconstructed in the new location by DEMEX under an amended design.

\$1.5 M

Confidential client

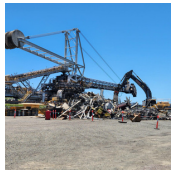


### INDUSTRIAL MILL

DEMEX was engaged to undertake demolition of mill infrastructure, including the crushing house, tank farms, factory workshops and offices, molasses tank, clarification tanks, processing area, sugar storage shed, and tanks.

\$4 M

Confidential client



### DALRYMPLE BAY

DEMEX was engaged by G&S Engineering, a subcontractor to BMA, to remove a large decommissioned coal stacker reclaimer, which formed part of the Dalrymple Bay Coal Terminal's infrastructure used by multiple coal producing companies operating in the region. All works were conducted in a live operating environment.

\$0.3 M

G & S Engineering



### WILD DUCK ISLAND

Demolition and removal of all island infrastructure, plant, equipment and material associated with the abandoned resort construction on a remote 338 hectare island off the Central Queensland Coast. Rehabilitation to support natural regeneration and return to local Koinjama people.

\$1.3 M

Q Build



### BOYNE ISLAND SMELTER

DEMEX was engaged as a principal contractor to undertake removal of hazardous Spent Cell Lining material from five 5,000m<sup>3</sup> tanks and demolition of the tanks. Demolition was conducted over two stages using a controlled collapse method. The material's toxicity meant it was necessary for works to be conducted at night and under optimal weather conditions.

\$0.5 M

Rio Tinto



### FILTER BAG SILO DEMOLITION

DEMEX was engaged to demolish and remove redundant assets from a cement facility in North Queensland; specifically, to remove a 27 metre high filter bag silo. Works completed over a 24/7 delivery program to minimise impact to operations.

\$0.3 M

Confidential client



### COLGATE PALMOLIVE MANUFACTURING FACILITY

DEMEX was engaged as principal contractor for the Colgate Palmolive Demolition Project. The project included the complete demolition of two major structures and a number of smaller facilities on this industrial site located on Brisbane's outskirts.

\$2.7 M

Logos Property Group



### COLLINGWOOD TIN MINE PROCESSING PLANT

DEMEX was engaged as principal contractor to demolish the former tin mine's processing plant, located 30 minutes from Cooktown in North Queensland. Works included demolition of multiple structures, including processing plant, crusher, silo, and conveyors.

\$1.2 M

Department of Natural Resources



### BLAYNEY DEWATERING FACILITY, NSW

Engaged as principal contractor to undertake decommissioning, demolition, and disposal of the Blayney Dewatering Plant, located at Newcrest's Cadia Valley Operations in New South Wales. DEMEX undertook reclamation of residual mining products prior to the commencement of demolition works. Remediation of contaminated soil, which included asbestos, copper, and arsenic, also formed part of the project scope.

\$2.0 M

Newcrest Mining Limited



### MUL034 AND MUL037 - MULWALA EXPLOSIVES FACILITY, NSW

Engaged as the principal contractor for the demolition of 47 of the highest-risk structures at the Mulwala Explosives Facility. Structures were deemed high risk as a result of residual nitrocellulose (NC) contamination. The site included oil refineries, chemical processing plants, and storage depots carrying chemicals in large quantities. All works were conducted while the site remained operational during Covid-19 protocols.

\$6.9 M

Australian Munitions (Thales)

## OUR CLIENTS

THALES



Department of  
Natural Resources,  
Mines and Energy

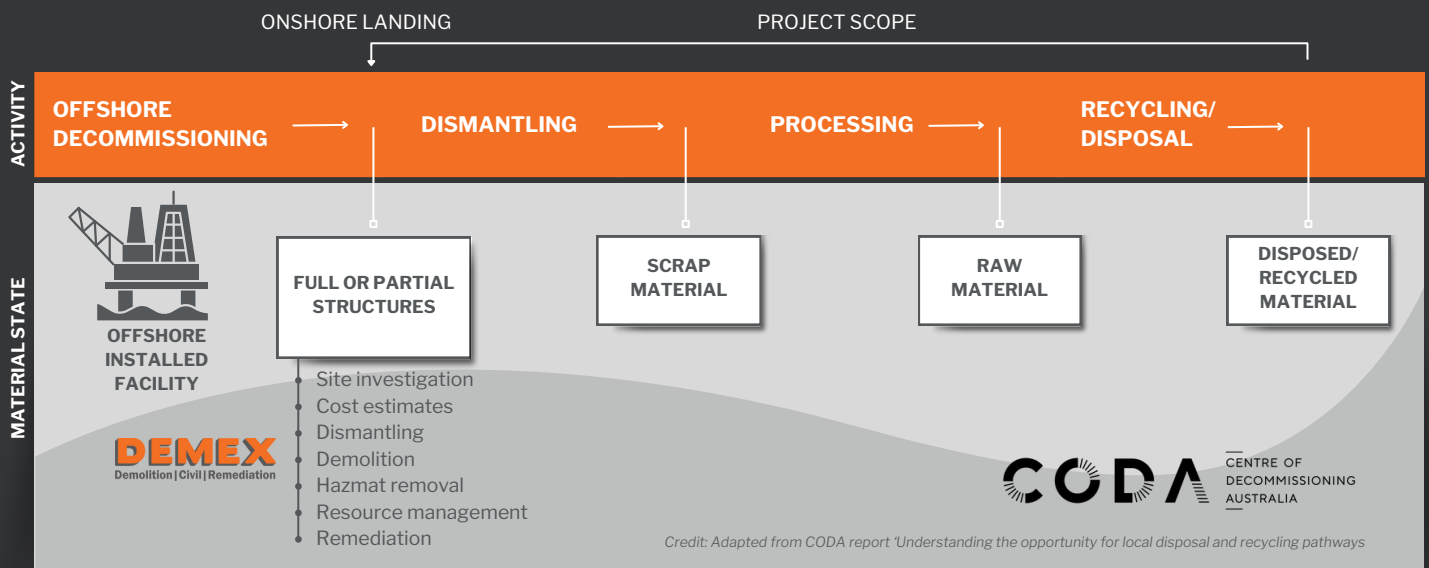


BHP

RioTinto



## OIL & GAS FACILITY CLOSURE: ONSHORE PROJECT DELIVERY



As offshore decommissioning activity in Australia gains momentum in the wake of assets reaching their end of life, the requirement for disposal capability and capacity is growing in parallel. DEMEX is responding to this demand by bringing its industrial and mine demolition experience to support the decommissioning of offshore oil and gas infrastructure.

In terms of project delivery, DEMEX has the capability to work with asset owners, head contractors, and complementary service providers to undertake decommissioning and demolition of full or partial offshore structures which have been landed onshore. Drawing on a demonstrated track record of scoping, pricing, methodology design, and project delivery of whole and large structures similar to offshore facilities, including in port and marine environments, we are ready to collaborate with the broader industry. DEMEX is a partner in the Centre of Decommissioning Australia.



## PEOPLE & CULTURE

We draw on the experience, skills, and commitment of our people to deliver projects safely and effectively for our clients. Many of our team, from directors through to labourers and operators, are long term DEMEX employees and bring decades of demolition industry experience to every project. This allows DEMEX to identify opportunities to realise economic value and deliver innovative project solutions for clients in challenging, remote, and complex environments.

Onsite project teams include project managers, site managers, site supervisors, labourers, operators, asbestos technicians, and third party contractors for specialist service areas.

Project estimating, planning, and management is undertaken by a core group of professionals located at DEMEX's head office in Yatala, with many of the team bridging both site and project management roles.



## SUSTAINABILITY STEWARDSHIP

We recognise responsible corporate citizenship is an ongoing process that periodically requires adjustment to meet our own internal objectives and stakeholder expectations. Our sustainability efforts are focused in the following areas:

- Safe people with an appreciation of our commitments to Indigenous and culturally and linguistically diverse Australians
- Responsible resource management, focusing on circular economy principles
- Ethical supply chain management and local economic development.

Our commitment to community is demonstrated in supporting local and regional businesses through the purchase of ongoing additional costs such as maintenance supplies and services along with delivery of community initiatives, adherence to a robust code of ethics, and providing pre-vocational training opportunities for skilled and unskilled local labour.



## INDIGENOUS AND LOCAL ECONOMIC DEVELOPMENT

Acknowledging the importance of contributing to the economic development and capacity building of Indigenous Australians, DEMEX has an Indigenous Employment Strategy (IES), which has been developed in conjunction with 100 percent owned Indigenous business, Stapleton Indigenous Solution (SIS). In the interest of providing both business and employment opportunities, our IES approach provides for:

- Procuring supply from local and Indigenous businesses, representing meaningful percent of total project spend
- Cross cultural training, both for the DEMEX crew and Indigenous contractors
- Project specific training for Indigenous contractors
- Delivery of Australian road safety and road rules training in language through our inhouse DriveAbout Workforce training program.



Queensland  
Government

