

HEALTH SECTOR



Delivering projects safely *in the unique hospital environment.*

Demolition within the health sector is frequently undertaken in conjunction with government departments and hospital administration. We have worked with major health services providers, including state government departments, as well as hospital management teams who are responsible for development projects at their site.

Our experience in the health sector means we have a deep understanding of the challenges associated with this unique environment. In addition to sensitivity to meeting the needs of diverse stakeholders, we appreciate that undertaking works in a live environment must consider impacts to patients and workers, as well as vehicle and pedestrian traffic.

To provide peace of mind to our clients, we bring significant experience working in this unique environment and draw on successful project delivery at multiple private and public health care facilities.



About DEMEX

OVERVIEW

DEMEX is a specialist demolition contractor combining services in decommissioning, deconstruction, remediation, and civil works to deliver end-to-end solutions on projects across the industrial, property development, resources and energy, government, and marine sectors. With a national reach, we assist clients to achieve successful end of asset outcomes through responsible and safe decommissioning, deconstruction, and remediation. Operating as a business since 1993, DEMEX Pty Ltd incorporated in its current form in 2019. As a prequalified supplier for both the Queensland and New South Wales governments, we have worked extensively in the health sector throughout these states. We undertake projects both as principal contractor and subcontractor.

PROJECT DELIVERY

- ECI & enabling works
- Demolition strategy
- Approvals
- Programming
- Costing
- Project execution
- WHSEQ
- Value engineering

CAPABILITIES



DEMOLITION CONSULTING

Preparation of closure cost estimates and draft demolition methodologies for budgetary and planning associated with sustaining capital works, as well as decommissioning, closure, and earlier contractor involvement (ECI) works.



HAZARDOUS MATERIALS AND ASBESTOS REMOVAL

Hazardous material and asbestos removal for inner city multi storey structures to remote site decommissioning of heavy industrial and mine infrastructure.



DEMOLITION AND DECOMMISSIONING

Complete and partial structures (internal and external), bridges, structures at height, multi-level structures, detailed and intricate demolition, and high risk demolition requiring specialised machinery and project management.



CONTAMINATED SITE REMEDIATION

Contaminated site remediation for polluted sites, including industrial mine sites. Hazardous waste soil remediation in keeping with all legislated State, Territory, and Commonwealth environmental and OHS regulations.



CONSTRUCTION AND DEMOLITION WASTE RECYCLING

Recycling targets set, tracked, and reported for every project, with an overarching objective to minimise materials entering landfill either through reuse or recycling. Industry leading performance with more than 90% recycling achieved on all projects, supporting clients to meet emissions and Green Star reporting requirements.



CIVIL WORKS

Core fleet of late model equipment and machinery to undertake earthmoving, bulk earthworks, remediation, civil works, site clearing, site preparation, and site clean ups.

COMMITMENTS

We recognise responsible corporate citizenship is an ongoing process that periodically requires adjustment to meet our own internal objectives and stakeholder expectations. Our commitment to community is demonstrated in supporting local and regional businesses through the purchase of ongoing additional items such as maintenance supplies and services along with delivery of community initiatives, adherence to a robust code of ethics, and providing pre-vocational training opportunities for skilled and unskilled local labour. In terms of Indigenous and local economic development we procure locally and undertake cross cultural project specific training, both for the DEMEX crew and Indigenous contractors.



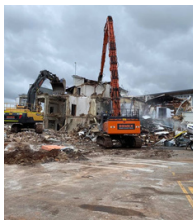
Queensland
Government



Track Record


**GYMPIE
HOSPITAL**

DEMEX was engaged by Queensland Health to undertake demolition of the former nurses' quarters on the hospital site. Works were conducted on a live operational site with requirements for management of traffic, stringent environmental requirements, and recycling. The project was completed safely and to the client's satisfaction.


**KINGAROY
HOSPITAL &
DENTAL CLINIC**

DEMEX was engaged to complete demolition of the main building of the old Kingaroy Hospital and Kingaroy Dental clinic as two separate projects. Contract works consisted of internal asbestos removal and full demolition of the existing structures, with works conducted on live operational hospital grounds.

\$0.63 M


**MUDGEE HEALTH
SERVICES**

DEMEX was engaged as the demolition contractor for the enabling works package of the Mudgee Hospital Redevelopment Project. Demolition works included a number of historic buildings including the Community Health Building and former Training Centre.

\$1.68 M


ROMA HOSPITAL

The Queensland Government engaged DEMEX as principal contractor on this project to demolish the old Roma Hospital, the primary healthcare facility in Roma. The project required demolition of four buildings, carpark, removal of all asbestos contaminated material (ACM) and other hazardous materials (hazmat), site disconnections, and civil works, while the new Roma hospital remained operational for the duration of the project.

\$7.1 M


**ST ANDREW'S
PRIVATE
HOSPITAL
IPSWICH**

Undertaken at a busy regional hospital in Ipswich, this project involved partial dismantling of the awning which covered the designated ramp for ambulances. Demolition works involved both oxy cutting and mechanical demolition of the awning, as well as demolition and removal of the carpark slab for an extension of 350 m², completed by excavator.

\$0.1 M


**WESTERN
CANCER CENTRE,
DUBBO
HOSPITAL**

This project incorporated demolition of a plant room and water tower located onsite. Working within live hospital grounds required detailed coordination and open communication with key stakeholders throughout the project to ensure hospital users were not adversely impacted.

\$0.5 M


**BRAIDWOOD &
HARDEN MPS**

DEMEX was engaged as the preferred subcontractor for this interstate project based in Braidwood and Harden in regional New South Wales. The project involved extensive HAZMAT removal including asbestos, lead and mould. Demolition works followed thereafter to remove the multiple redundant buildings on the grounds of a live hospital site.

\$1.12 M

