

INDUSTRIAL DEMOLITION

DEMEX
Demolition | Civil | Remediation

PO BOX 375, Ormeau 4208
WWW.DEMEX.COM.AU
info@demex.com.au | 1300 634 777



Effective decommissioning for ageing assets

Industrial demolition is required for decommissioned facilities, such as power plants, mills, power stations, hospitals, schools, manufacturing plants, and contaminated sites. Requiring specialist skills in deconstruction, as well as detailed demolition planning, DEMEX works with project owners to manage the closure, decommissioning, and deconstruction of industrial assets.

With experience in industrial infrastructure dismantling, we work with clients on partial or complete demolition of all industrial asset types. Our collaborative approach encompasses detailed planning, project delivery, and remediation, asset recovery and salvage of materials, to support our clients in meeting their commitments with respect to responsible resource management. The DEMEX team works with clients to:

- Plan and manage decommissioning and demolition of site infrastructure
- Identify engineering and safety challenges to develop the safest and most economically viable method

- Plan and manage decommissioning and demolition of site infrastructure
- Identify engineering and safety challenges to develop the safest and most economically viable method
- Engage specialist technical consultants, such as structural engineers with demolition experience to identify and manage hazards and risks
- Assess equipment requirements for deconstruction and mobilisation/demobilisation based on the site's geographic location
- Identify and remove hazardous materials, including asbestos and volatile materials.

As an industrial demolition contractor providing decommissioning, deconstruction and remediation services, we understand the risks associated with industrial demolition projects. With safety as our number one priority, our approach to industrial demolition is to mitigate hazards, while balancing budget, schedule, and method considerations to deliver each project successfully.

About DEMEX

OVERVIEW

DEMEX is a specialist demolition contractor combining services in decommissioning, deconstruction, remediation, and civil works to deliver end-to-end solutions on projects across the industrial, property development, resources and energy, government, and marine sectors. With a national reach, we assist clients to achieve successful end of asset outcomes through responsible and safe decommissioning, deconstruction, and remediation.

Operating as a business since 1993, DEMEX Pty Ltd incorporated in its current form in 2019. Having delivered specialist demolition, civil, and remediation services since 2014. We undertake projects both as principal contractor and subcontractor on sensitive, complex, high profile projects in diverse sectors, including energy, resources, government, infrastructure, industrial, marine, and construction.

PROJECT DELIVERY

- ECI & enabling works
- Demolition strategy
- Approvals
- Programming
- Costing
- Project execution
- WHSEQ
- Value engineering

INDUSTRY

- Mining & Resources
- Industrial
- Health & Education
- Government & Defence
- Property & Construction
- Infrastructure
- Oil & Gas
- Ports & Marine

CAPABILITY

- Demolition
- Civil & bulk earthworks
- Remediation
- Asbestos & hazmat services
- Remote & regional delivery
- Partial & whole structures
- Sustaining capital upgrades
- Asset removal & resale
- Recycling

COMMITMENTS

We recognise responsible corporate citizenship is an ongoing process that periodically requires adjustment to meet our own internal objectives and stakeholder expectations. Our commitment to community is demonstrated in supporting local and regional businesses through the purchase of ongoing additional items such as maintenance supplies and services along with delivery of community initiatives, adherence to a robust code of ethics, and providing pre-vocational training opportunities for skilled and unskilled local labour. In terms of Indigenous and local economic development we procure locally and undertake cross cultural project specific training, both for the DEMEX crew and Indigenous contractors.



Queensland
Government





Demolition methods

We employ various demolition methods, depending on a project's specific need, including:

TOP-DOWN

Top-down demolition, which involves deconstruction working from the top of the structure. Cranes are used to lift plant and machinery onto the top of the structure, allowing a building to be demolished floor by floor.

INDUCED COLLAPSE

Induced collapse, whereby sections of a structure are systematically weakened near the bottom to allow it to be brought to the ground, by either pushing or pulling to collapse the structure.

MECHANICAL

Mechanical demolition uses plant and equipment such as cranes, loaders, bulldozers, and high reach excavators with attachments, to allow a structure to be torn apart and remove workers away from the demolition workplace.

EXPLOSICE

A specialist method of demolition, explosive demolition requires the use of explosives and is high risk work that is appropriately heavily regulated.

ASSET TYPES



Power Stations



Mines



Manufacturing & processing plants



Mills



Hospitals & Schools

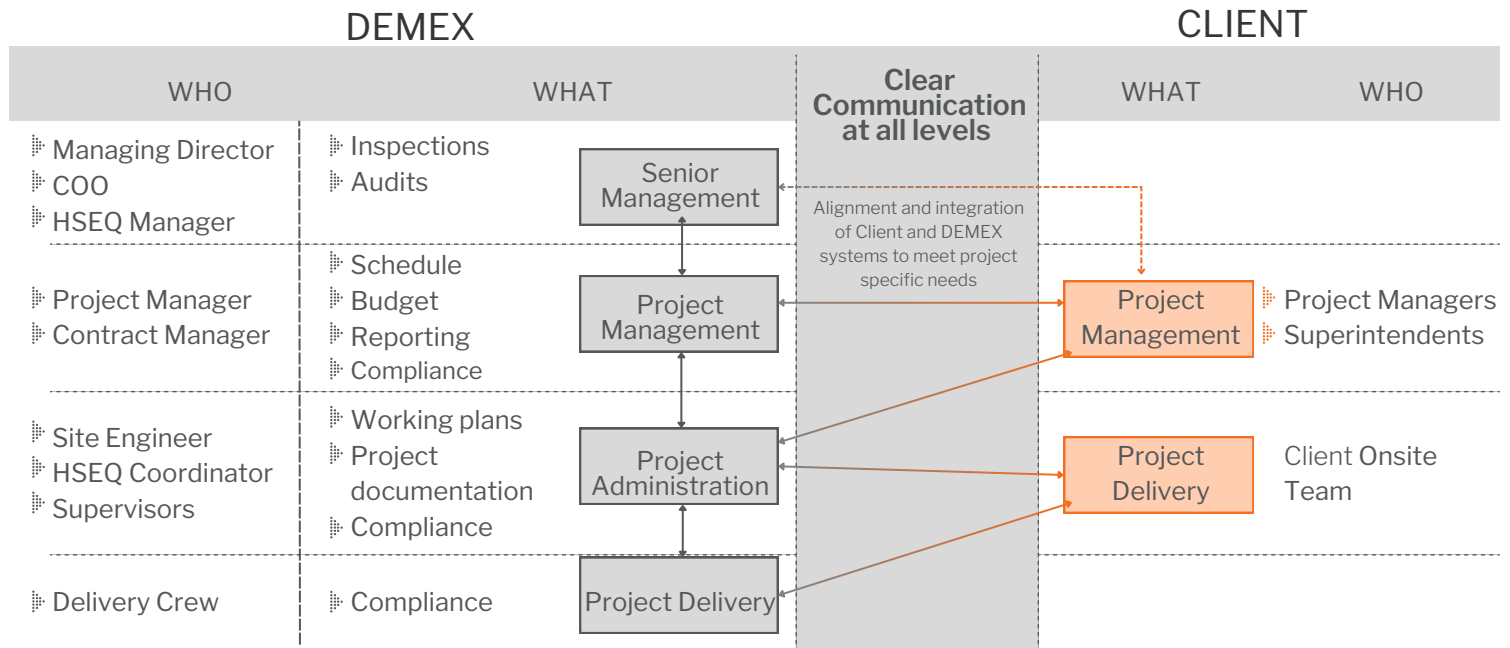


Commercial & industrial building

As ageing assets reach end of life, asset owners must plan for demolition and replacement. Apart from demolition planning and method considerations, project owners must also consider other factors, such as the presence of asbestos, lead, and hazardous materials, which can impact the project program and budget. Because some materials are only discovered at the time of demolition, diligent checks by experienced demolition specialists are essential.

To achieve the optimal outcome for clients, we work collaboratively to develop the safest and most effective methodology for the project, bringing in advanced technology to enhance delivery, either through an accelerated program or reduced costs. With an emphasis on bringing together the best thinking of both the client and our experienced team, we devise shared solutions that have achieved positive project outcomes for our clients.

HSEQ Governance Framework



Track Record



WA PLANT DISMANTLE & RELOCATION

DEMEX was engaged as principal contractor to dismantle and relocate a waste processing plant located in a 2,500m² industrial shed. The site remained operational during the dismantling before the plant was transported approximately 4,300 kilometres by road to Southeast Queensland. The plant was reconstructed in the new location by DEMEX under an amended design.

\$1.5 M

Confidential Client

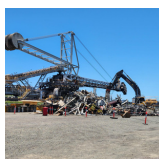


INDUSTRIAL MILL

DEMEX was engaged to undertake demolition of mill infrastructure, including the crushing house, tank farms, factory workshops and offices, molasses tank, clarification tanks, processing area, sugar storage shed, and tanks.

\$4 M

Confidential Client



DALRYMPLE BAY

DEMEX was engaged by G&S Engineering, a subcontractor to BMA, to remove a large decommissioned coal stacker reclaimer, which formed part of the Dalrymple Bay Coal Terminal's infrastructure used by multiple coal producing companies operating in the region. All works were conducted in a live operating environment.

\$0.3 M



ROMA HOSPITAL

The Queensland Government engaged DEMEX as principal contractor on this project to demolish the old Roma Hospital, the primary healthcare facility in Roma. The project required demolition of four buildings, carpark, removal of all asbestos containing material (ACM) and hazardous materials (hazmat), site disconnections, and civil works, while the new Roma hospital remained operational for the duration of the project.

\$7.1 M



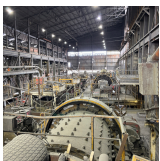
Track Record



KALAMIA STACKS

DEMEX demolished Wilmer Sugar to demolish two stacks (60 and 72 metres high) during a three month shutdown period. These works involved a unique demolition method using a remotely controlled demolition robot that conducted the works at height.

\$2.8 M



ZINC LEAD CONCENTRATOR GRINDING CIRCUIT

As part of the closure works being conducted at the Mount Isa Mines, DEMEX has been engaged to complete demolition of the inside grinding circuit at the Zinc Lead Concentrator. Due to the location, the methodology has allowed for both robotic demolition and conventional demolition with an excavator.

\$3.1 M

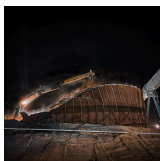


FILTER BAG SILO DEMOLITION

DEMEX was engaged to demolish and remove redundant assets from a cement facility in North Queensland; specifically, to remove a 27 metre high filter bag silo. Works completed over a 24/7 delivery program to minimise impact to operations.

\$0.3 M

Confidential Client



BOYNE ISLAND SMELTER

DEMEX was engaged as a principal contractor to undertake removal of hazardous Spent Cell Lining material from five 5,000m³ tanks and demolition of the tanks. Demolition was conducted over two stages using a controlled collapse method. The material's toxicity meant it was necessary for works to be conducted at night and under optimal weather conditions.

\$0.5 M



COLGATE PALMOLIVE MANUFACTURING FACILITY

DEMEX was engaged as principal contractor for the Colgate Palmolive Demolition Project. The project included the complete demolition of two major structures and a number of smaller facilities on this industrial site located on Brisbane's outskirts.

\$2.7 M



COLLINGWOOD TIN PROCESSING PLANT

DEMEX was engaged as principal contractor to demolish the former tin mine's processing plant, located 30 minutes from Cooktown in North Queensland. Works included demolition of multiple structures, including processing plant, crusher, silo, and conveyors.

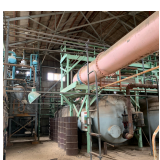
\$1.2 M



BLAYNEY DEWATERING FACILITY, NSW

Engaged as principal contractor to undertake decommissioning, demolition, and disposal of the Blayney Dewatering Plant, located at Newcrest's Cadia Valley Operations in New South Wales. DEMEX undertook reclamation of residual mining products prior to the commencement of demolition works. Remediation of contaminated soil, which included asbestos, copper, and arsenic, also formed part of the project scope.

\$2.0 M



MUL034 & MUL037 MULWALA EXPLOSIVES FACILITY, NSW

Engaged as the principal contractor for the demolition of 47 of the highest-risk structures at the Mulwala Explosives Facility. Structures were deemed high risk as a result of residual nitrocellulose (NC) contamination. The site included oil refineries, chemical processing plants, and storage depots carrying chemicals in large quantities.

\$6.9 M

