

INFRASTRUCTURE



The challenges of ageing infrastructure

As ageing assets make way for new infrastructure there is a need for decommissioning and demolition in accordance with regulations and environmental standards. Specialising in bridge demolition, and with significant experience and resources to undertake other large and complex infrastructure projects, we work with government and commercial clients to undertake infrastructure projects involving roads, bridges, rail, ports and stadiums.

Infrastructure projects are frequently delivered in large work zones covering significant distances, or in difficult conditions, such as over live motorways or waterways with strict environmental conditions. We work collaboratively with clients, principal contractors, and suppliers to deliver projects successfully by drawing on our team's skills, experience, and commitment to innovation.

With safety as our number one priority, our approach to demolition of ageing assets is to mitigate hazards, while balancing budget, schedule, and method considerations to deliver each project successfully. We comply with all regulations and standards required to achieve structural demolition and site remediation in a safe manner. Our project teams are supported with ongoing training and retraining on safety topics, correct demolition techniques, and correct use of tools and equipment to ensure safety awareness and practice is front of mind.

Among our infrastructure project success highlights are the Bateman's Bay Bridge demolition, Chinaman's Creek bridge demolition, the Logan Enhancement project, and Port of Bundaberg tank removal project.

With growing regulatory and community pressure to satisfy the demand for improved environmental performance with respect to asset management and circularity, we recognise DEMEX has an important role to play in achievement of broader sustainability objectives. In this regard, we work closely with principal contractors and government representatives to identify opportunities to reduce emissions from project delivery, including through the use of low emission machinery and fuels.

In keeping with broader sustainability management on our projects, and aligned to Best Practice In Construction principles, we strive to fulfil obligations to training, indigenous engagement, and local economic development, regardless of project location. In doing so, we work closely with our recycling partners who support project teams with cost effective materials disposal and supply.



INFRASTRUCTURE PROJECT DELIVERY SAFE AND SUSTAINABLE

Engaging an experienced demolition contractor during project planning can identify opportunities to innovate, reduce project schedule and costs, and realise optimal waste management outcomes

When determining the safest and most cost effective method for demolition, our experienced team will work with you to develop an approach that is tailored specifically to your project.

- Full compliance with relevant legislation, standards, and regulations
- Diligent risk management
- Hazmat removal and remediation (asbestos, lead in paints, PCBs)
- Detailed demolition methodology informed by engineering and destructive audits
- Modern, well-maintained equipment fleet
- Responsive stakeholder management
- Innovation and lateral thinking
- Responsible environmental stewardship of demolition materials and resource management
- Civil earthworks and site preparation for construction.
- Subcontractor management and coordination

We have the capability to deliver works as a principal contractor and coordinate the services of sub-contractors onsite on behalf of the developer

About DEMEX

OVERVIEW

DEMEX is a specialist demolition contractor combining services in decommissioning, deconstruction, remediation, and civil works to deliver end-to-end solutions on projects across the industrial, property development, resources and energy, government, and marine sectors. With a national reach, we assist clients to achieve successful end of asset outcomes through responsible and safe decommissioning, deconstruction, and remediation.

Operating as a business since 1993, DEMEX Pty Ltd incorporated in its current form in 2019. Having delivered specialist demolition, civil, and remediation services since 2014. We undertake projects both as principal contractor and subcontractor on sensitive, complex, high profile projects in diverse sectors, including energy, resources, government, infrastructure, industrial, marine, and construction.

PROJECT DELIVERY

ECI & enabling works
Demolition strategy
Approvals
Programming
Costing
Project execution
WHSEQ
Value engineering

INDUSTRY

Mining & Resources
Industrial
Health & Education
Government & Defence
Property & Construction
Infrastructure
Oil & Gas
Ports & Marine

CAPABILITY

Demolition
Civil & bulk earthworks
Remediation
Asbestos & hazmat services
Remote & regional delivery
Partial & whole structures
Sustaining capital upgrades
Asset removal & resale
Recycling

COMMITMENTS

We recognise responsible corporate citizenship is an ongoing process that periodically requires adjustment to meet our own internal objectives and stakeholder expectations. Our commitment to community is demonstrated in supporting local and regional businesses through the purchase of ongoing additional items such as maintenance supplies and services along with delivery of community initiatives, adherence to a robust code of ethics, and providing pre-vocational training opportunities for skilled and unskilled local labour. In terms of Indigenous and local economic development we procure locally and undertake cross cultural project specific training, both for the DEMEX crew and Indigenous contractors.



Queensland
Government



Track Record



BATEMANS BAY

Demolition of 307 metre old Batemans Bay Bridge across the Clyde River, which forms part of the Batemans Marine Park. comprising of ten spans with a 34 metre central steel vertical lift truss. The spans from 19 metres and 120 tonnes for the back spans to 37 metres and 210 tonnes for the truss spans.

\$11 M

JOHN HOLLAND



HAUGHTON RIVER

Part of the Queensland State Government's infrastructure upgrade of the Bruce Highway to for vehicle travel in the region. The works included demolition of a vehicle bridge over the Haughton River, Horseshoe Lagoon and Pink Lilly, in addition to two asbestos containing houses and batt house shacks.

\$1.9 M

TIG
An Albers, Bailey, BMD & JF Hall joint venture



CHINAMANS CREEK BRIDGE

Part of the \$123.7 million Cairns Southern Access Corridor. Works consisted of removal of prestressed concrete bridge deck units; relieving slabs; abutments; and piers consisting of headstocks and piles with pile encasements. The bridge needed to be removed in its entirety down to riverbed level.

\$0.95 M

Georgiou

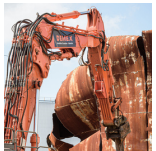


LOGAN ENHANCEMENT PROJECT

DEMEX was engaged to conduct the complete and partial demolition of 11 major bridges passing over the Logan Motorway and Gateway Motorway in Logan QLD. The project also involved the removal of multiple extensive sections of concrete road barriers.

\$2.7 M

CPB CONTRACTORS



PORT OF BUNDABERG

DEMEX was engaged by Okara Pty Ltd to undertake demolition of all on site structures and removal of 8 fuel storage tanks at the Port of Bundaberg, located in Bundaberg, a regional Queensland town. Removal of the tanks was another step in the upgrade of port infrastructure being undertaken by the owner, Gladstone Port Corporation.

\$0.33 M

OKARA
PTY LTD



WASTE WATER TREATMENT PLANT

Works involved detailed saw cutting and major structural demolition works around the delicate infrastructure. The project also included maintaining extremely low vibration limits, to ensure the infrastructure left behind was not disturbed.

\$0.2 M

Fulton Hogan



STAPLEY DRIVE BRIDGE - PACIFIC MOTORWAY

Demolition of the Stapley Drive bridge passing over the Pacific Motorway (M1) on the Gold Coast. The demolition formed part of the major Pacific Highway upgrade works between Mudgeeraba and Varsity Lakes.

\$0.1 M

CPB CONTRACTORS

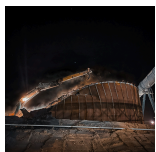


PALM BEACH TO TUGAN M1 UPGRADE

DEMEX was engaged to safely demolish seven bridges in a five kilometre stretch of the Pacific Motorway upgrade project representing Package C of the greater \$1.5 billion-dollar Pacific Motorway upgrade project while minimizing disruption to road users.

\$1.9 M

SEYMOUR WHYTE



BOYNE ISLAND SMELTER

DEMEX was engaged as a principal contractor to undertake removal of hazardous Spent Cell Lining material from five 5,000m³ tanks and demolition of the tanks. Demolition was conducted over two stages using a controlled collapse method. The material's toxicity meant it was necessary for works to be conducted at night and under optimal weather conditions.

\$0.5 M

RioTinto



DALRYMPLE BAY

DEMEX was engaged by G&S Engineering, a subcontractor to BMA, to remove a large decommissioned coal stacker reclaimer, which formed part of the Dalrymple Bay Coal Terminal's infrastructure used by multiple coal producing companies operating in the region. All works were conducted in a live operating environment.

\$0.3 M

G&S ENGINEERING SERVICES