

# MINE CLOSURE STUDIES

**DEMEX**  
Demolition | Civil | Remediation

PO BOX 375, Ormeau 4208  
WWW.DEMEX.COM.AU  
info@demex.com.au | 1300 634 777



## A risk based approach

We assist mine operators to undertake closure planning and implementation, sustaining capital projects, and major projects requiring decommissioning, deconstruction, asbestos and hazardous materials removal, remediation, and civil earthworks.

Our team thrives in complex and challenging environments that demand innovative solutions. From closure planning to rehabilitation, we work with you to identify the approach to decommissioning, deconstruction, and mine closure that best supports your business' objectives. A strong HSEQ safe approach is evident on each project we undertake, demonstrated in our compliance record that provides confidence to clients in the integrity of our approach.

We undertake projects as both principal contractor and subcontractor, and on every project maintain our focus on achieving industry-leading standards of environmental stewardship, recycling up to 99 percent of waste salvaged at site.

Mine site management and decommissioning presents unique challenges for mine operators, who without the knowledge, skills, and experience to inform planning and project execution, put their business at risk of financial overruns and critical failure at mine decommissioning.

Through mine closure study, mine operators benefit from a specialist technical skillset to navigate the unique challenges of mine site decommissioning

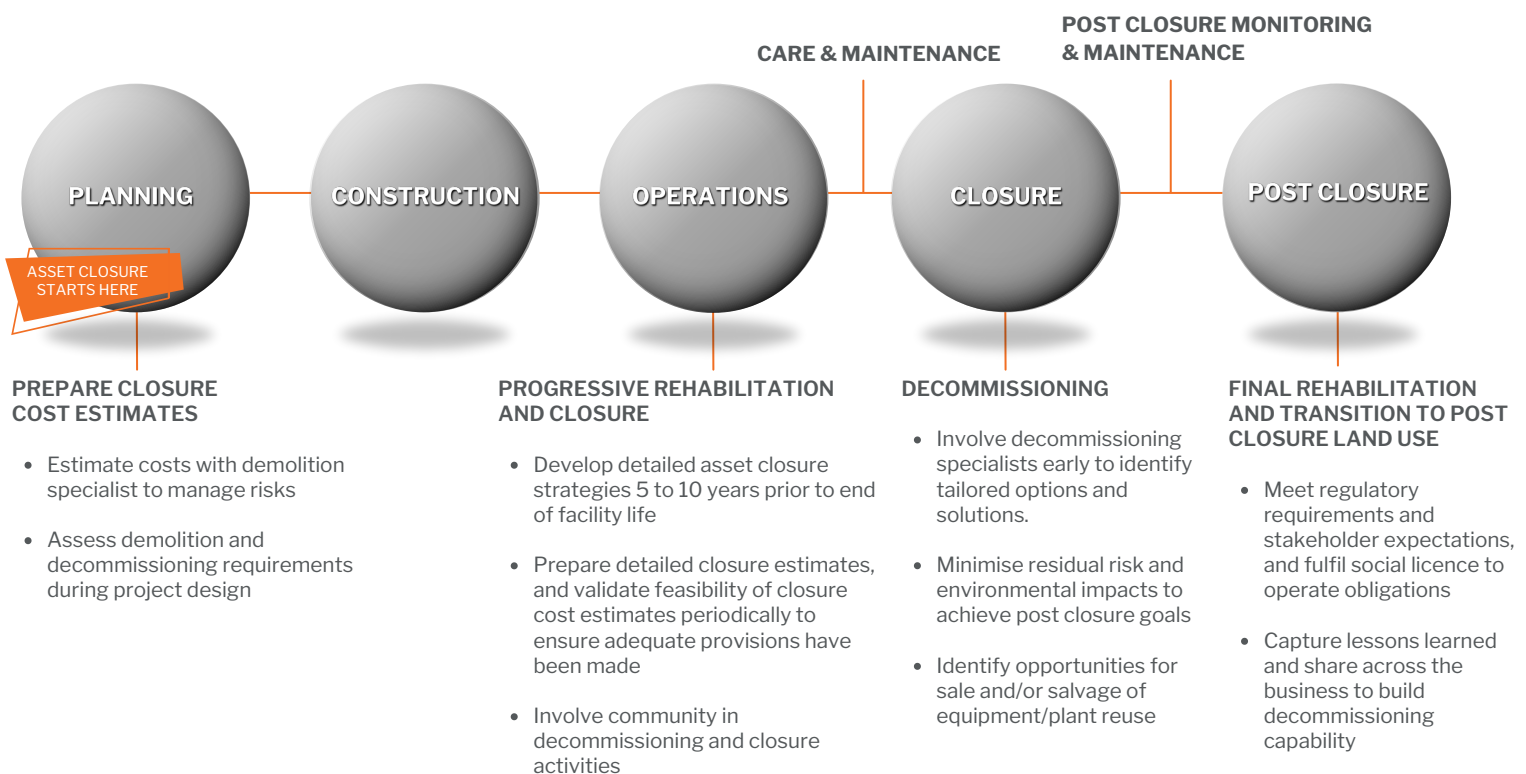
The challenges and risks for mine operators have never been greater, making the management of mine closure risk a key factor at all stages of the mine lifecycle. In the context of increasing expectations and legislation around progressive mine closure planning and activities, remediation, and rehabilitation, preparing and implementing a safe and cost-effective approach for demolition of mining related infrastructure is key.

While mine design and operations may be well understood by operators, the costs and design of progressive closure activities, such as mine site demolition, are not. At mine closure, operators have considerations that differ to operational concerns.

Without input from a demolition specialist, closure cost estimates for key activities such as tailings capping, rehabilitation, and demolition can be significantly underestimated. Calculation of costs varies according to operational status of the mine, the mine plan, progressive rehabilitation, and method for estimating costs.

Whether your project requires inputs to early mine design planning, is an operating mine, preparing for closure, or a disused or derelict facility, we will take a risk-based approach in development of appropriately robust mine closure cost estimates, methodologies, and demolition plans. From demolition consulting to complex infrastructure deconstruction and removal, remediation and rehabilitation, our team works with you to achieve your closure goals.

## Asset closure planning and implementation





## About DEMEX

### OVERVIEW

DEMEX is a specialist demolition contractor combining services in decommissioning, deconstruction, remediation, and civil works to deliver end-to-end solutions on projects across the industrial, property development, resources and energy, government, and marine sectors. With a national reach, we assist clients to achieve successful end of asset outcomes through responsible and safe decommissioning, deconstruction, and remediation.

Operating as a business since 1993, DEMEX Pty Ltd incorporated in its current form in 2019. Having delivered specialist demolition, civil, and remediation services since 2014. We undertake projects both as principal contractor and subcontractor on sensitive, complex, high profile projects in diverse sectors, including energy, resources, government, infrastructure, industrial, marine, and construction.

### PROJECT DELIVERY

- ECI & enabling works
- Demolition strategy
- Approvals
- Programming
- Costing
- Project execution
- WHSEQ
- Value engineering

### INDUSTRY

- Mining & Resources
- Industrial
- Health & Education
- Government & Defence
- Property & Construction
- Infrastructure
- Oil & Gas
- Ports & Marine

### CAPABILITY

- Demolition
- Civil & bulk earthworks
- Remediation
- Asbestos & hazmat services
- Remote & regional delivery
- Partial & whole structures
- Sustaining capital upgrades
- Asset removal & resale
- Recycling

### COMMITMENTS

We recognise responsible corporate citizenship is an ongoing process that periodically requires adjustment to meet our own internal objectives and stakeholder expectations. Our commitment to community is demonstrated in supporting local and regional businesses through the purchase of ongoing additional items such as maintenance supplies and services along with delivery of community initiatives, adherence to a robust code of ethics, and providing pre-vocational training opportunities for skilled and unskilled local labour. In terms of Indigenous and local economic development we procure locally and undertake cross cultural project specific training, both for the DEMEX crew and Indigenous contractors.



Queensland  
Government



## Track Record



### DULGALTD RIVER MINE

DEMEX was engaged to provide a third party quote for the future mine rehabilitation at the MMG Limited owned Dulgaltd River Mine located in Cloncurry, north west Queensland. DEMEX provided a comprehensive proposal that included site demolition works, removal of roads and tracks, removal of powerlines, removal of PAF material and the treatment of the ground surface to be delivered of a 26 month project

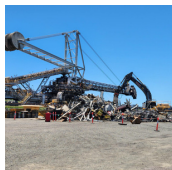
\$0.1 M



### COLLINGWOOD TIN MINE PROCESSING PLANT

DEMEX was engaged as principal contractor to demolish the former tin mine's processing plant, located 30 minutes from Cooktown in North Queensland. Works included demolition of multiple structures, including processing plant, crusher, silo, and conveyors.

\$1.2 M



### DALRYMPLE BAY

DEMEX was engaged by G&S Engineering, a subcontractor to BMA, to remove a large decommissioned coal stacker reclaimer, which formed part of the Dalrymple Bay Coal Terminal's infrastructure used by multiple coal producing companies operating in the region. All works were conducted in a live operating environment.

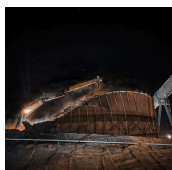
\$0.3 M



### BLAYNEY DEWATERING FACILITY, NSW

Engaged as principal contractor to undertake decommissioning, demolition, and disposal of the Blayney Dewatering Plant, located at Newcrest's Cadia Valley Operations in New South Wales. DEMEX undertook reclamation of residual mining products prior to the commencement of demolition works. Remediation of contaminated soil, which included asbestos, copper, and arsenic, also formed part of the project scope.

\$2.0 M



### BOYNE ISLAND SMELTER

DEMEX was engaged as a principal contractor to undertake removal of hazardous Spent Cell Lining material from five 5,000m<sup>3</sup> tanks and demolition of the tanks. Demolition was conducted over two stages using a controlled collapse method. The material's toxicity meant it was necessary for works to be conducted at night and under optimal weather conditions.

\$0.5 M



### MUL034 & MUL037 MULWALA EXPLOSIVES FACILITY, NSW

Engaged as the principal contractor for the demolition of 47 of the highest-risk structures at the Mulwala Explosives Facility. Structures were deemed high risk as a result of residual nitrocellulose (NC) contamination. The site included oil refineries, chemical processing plants, and storage depots carrying chemicals in large quantities. All works were conducted while the site remained operational during Covid-19 protocols.

\$6.9 M



### GRASSTREE MINE COST ESTIMATE REVIEW

Anglo American engaged DEMEX to undertake a cost estimate review of remaining infrastructure at Grasstree Mine to understand the demolition component of closure obligations associated with the site. Part of the Capcoal Complex, Grasstree was an underground longwall coal mine with supporting surface infrastructure. The scope of work for the study included: Assessment of the demolition methodology and costings of demolition works.

